



1001 East 17th Street
New York, NY 10011
Tel: (212) 477-1000
www.beroarch.com

© 2011 Bero Architecture
STRUCTURAL ENGINEER
ARCHITECT



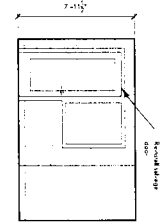
1001 East 17th Street
New York, NY 10011
Tel: (212) 477-1000
www.beroarch.com

215 West 11th Street
New York, NY 10011
Tel: (212) 477-1000
www.beroarch.com

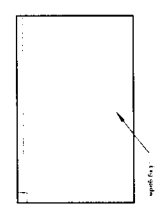
ARCHITECT
STRUCTURAL ENGINEER
ARCHITECT

CLIENT / COMPANY
PROJECT NAME
PROJECT NUMBER
DATE

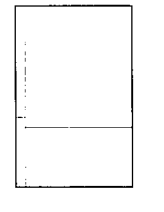
Scale: 1/4" = 1'-0"
Main Level
Interior Elevations



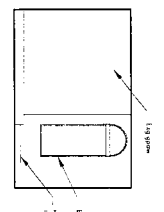
Meeting Room 104
North Elevation
SCALE: 1/4" = 1'-0"



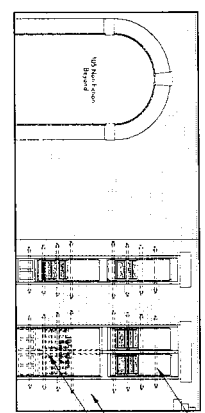
Meeting Room 104
East Elevation
SCALE: 1/4" = 1'-0"



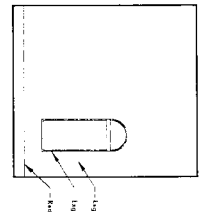
Meeting Room 104
South Elevation
SCALE: 1/4" = 1'-0"



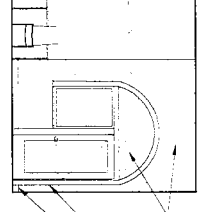
Meeting Room 104
West Elevation
SCALE: 1/4" = 1'-0"



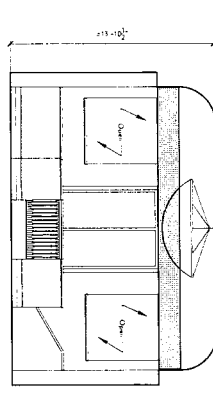
Media 103
North Elevation
SCALE: 1/4" = 1'-0"



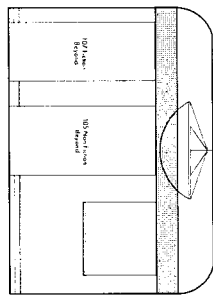
Media 103
East Elevation
SCALE: 1/4" = 1'-0"



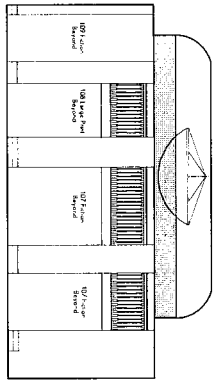
Media 103
South Elevation
SCALE: 1/4" = 1'-0"



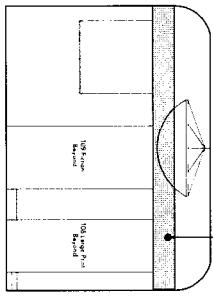
Rounds 106
North Elevation
SCALE: 1/4" = 1'-0"



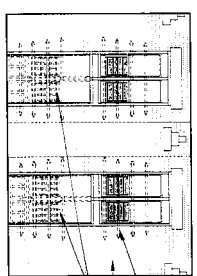
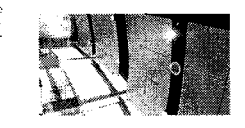
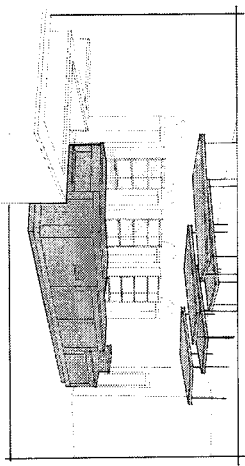
Rounds 106
East Elevation
SCALE: 1/4" = 1'-0"



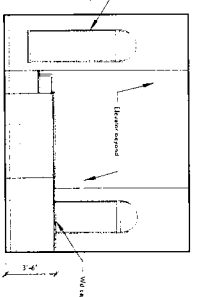
Rounds 106
South Elevation
SCALE: 1/4" = 1'-0"



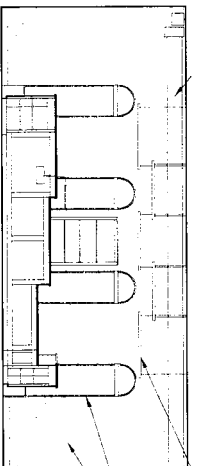
Rounds 106
West Elevation
SCALE: 1/4" = 1'-0"



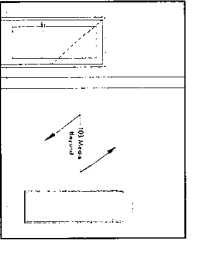
Circulation 101
North Elevation
SCALE: 1/4" = 1'-0"



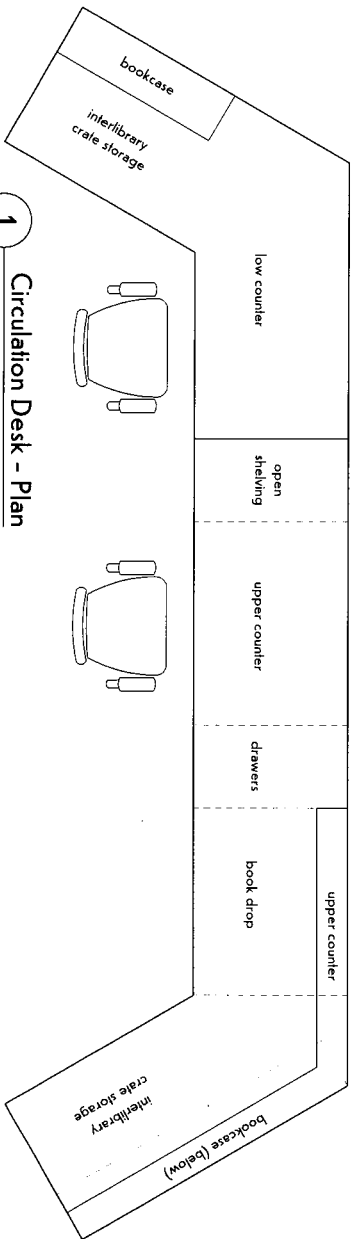
Circulation 101
East Elevation
SCALE: 1/4" = 1'-0"



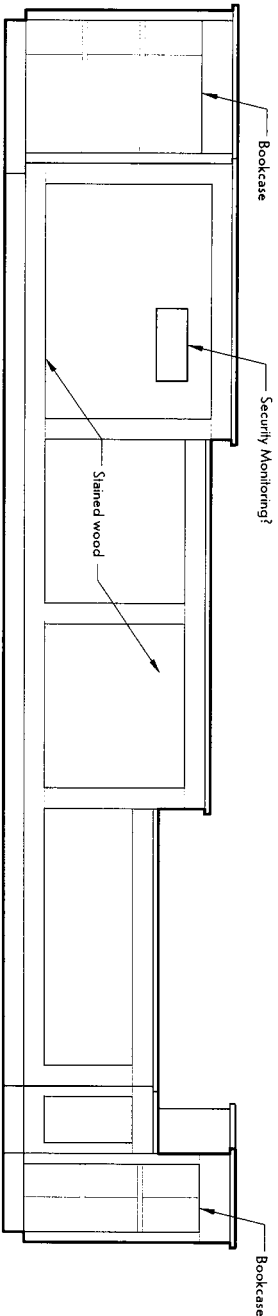
Circulation 101
South Elevation
SCALE: 1/4" = 1'-0"



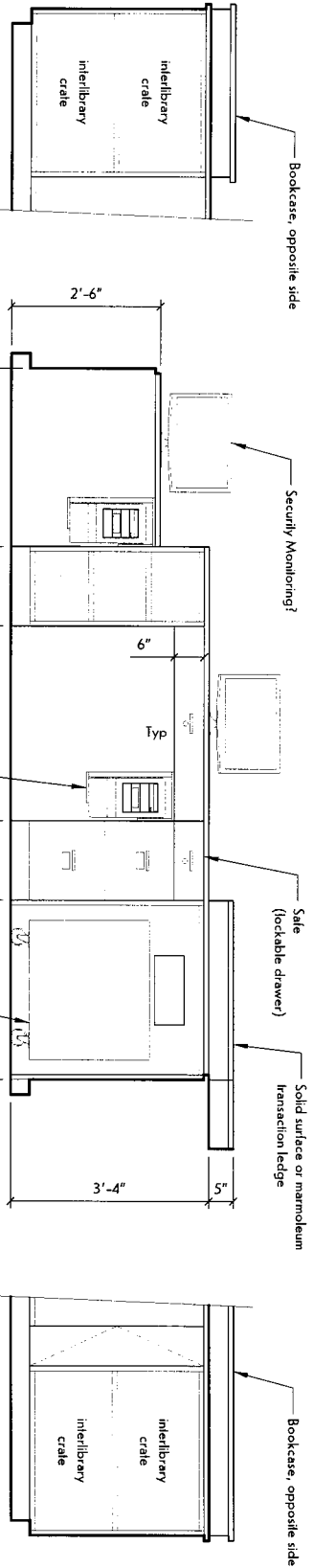
Circulation 101
West Elevation
SCALE: 1/4" = 1'-0"



1 Circulation Desk - Plan
SCALE: 1/2" = 1'-0"



2 Circulation Desk - Public Elevation
SCALE: 1/2" = 1'-0"



3 Circulation Desk Staff View - South Elevation
SCALE: 1/2" = 1'-0"



bero
ARCHITECTURE
32 Whitrop Street, Rochester, NY 14607
(585) 262-2035 | www.beroarchitecture.com

STAMP:

© 2023 Bero Architecture PLLC
CLIENT / OWNER:
Town of Warsaw
83 Center Street
Warsaw, NY 14569

PROJECT INFORMATION:
Second Floor Interior Addition
Warsaw Public Library
130 North Main Street, Warsaw, NY
PROJECT #: 22121
ISSUE DATE: 12/5/2023
DRAWN BY: LMV
SCALE: 1/2" = 1'-0"
SHEET TITLE:
Circulation Desk Details
SHEET NUMBER:
A-50



bero
ARCHITECTURE
1100 West 19th Street, Suite 200
Denver, CO 80202

PROJECT: Main & Lower Level Demolition
SHEET: D-10

CLIENT: OWNER
DATE: 1/27/2023
DRAWN BY: [Signature]

PROJECT: Main & Lower Level Demolition
SHEET: D-10

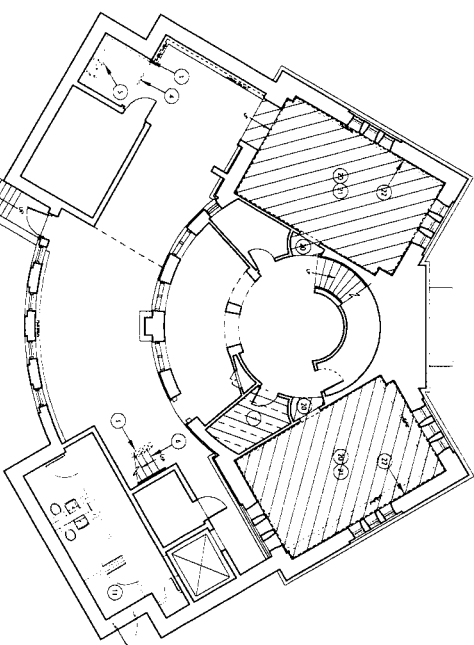
CLIENT: OWNER
DATE: 1/27/2023
DRAWN BY: [Signature]

PROJECT: Main & Lower Level Demolition
SHEET: D-10

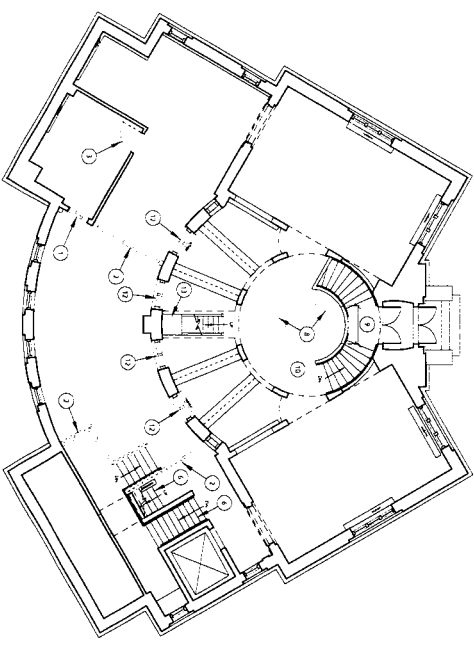
CLIENT: OWNER
DATE: 1/27/2023
DRAWN BY: [Signature]

PROJECT: Main & Lower Level Demolition
SHEET: D-10

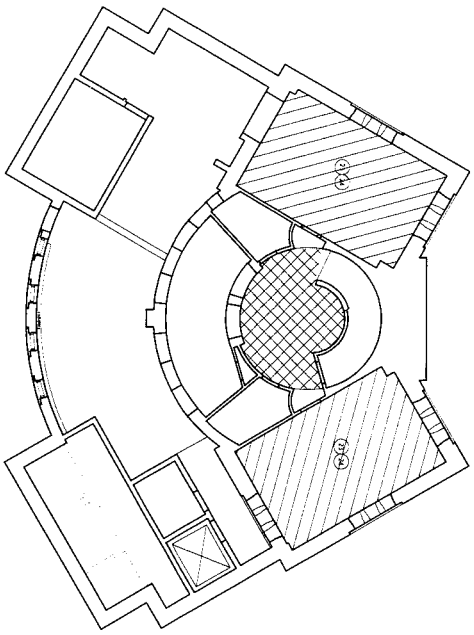
CLIENT: OWNER
DATE: 1/27/2023
DRAWN BY: [Signature]



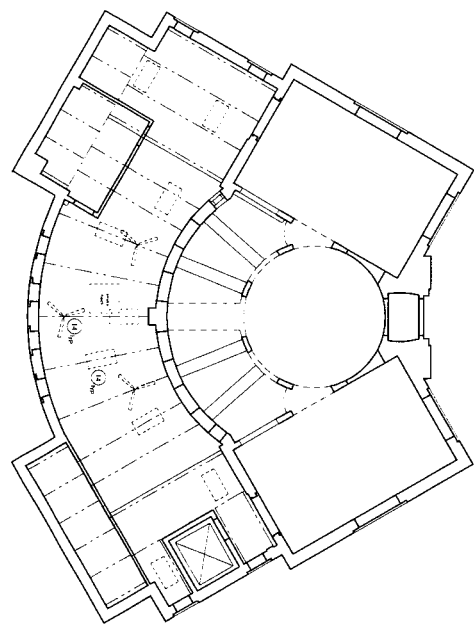
PROJECT: Main & Lower Level Demolition
SHEET: D-10
SCALE: 1/8" = 1'-0"



PROJECT: Main & Lower Level Demolition
SHEET: D-10
SCALE: 1/8" = 1'-0"

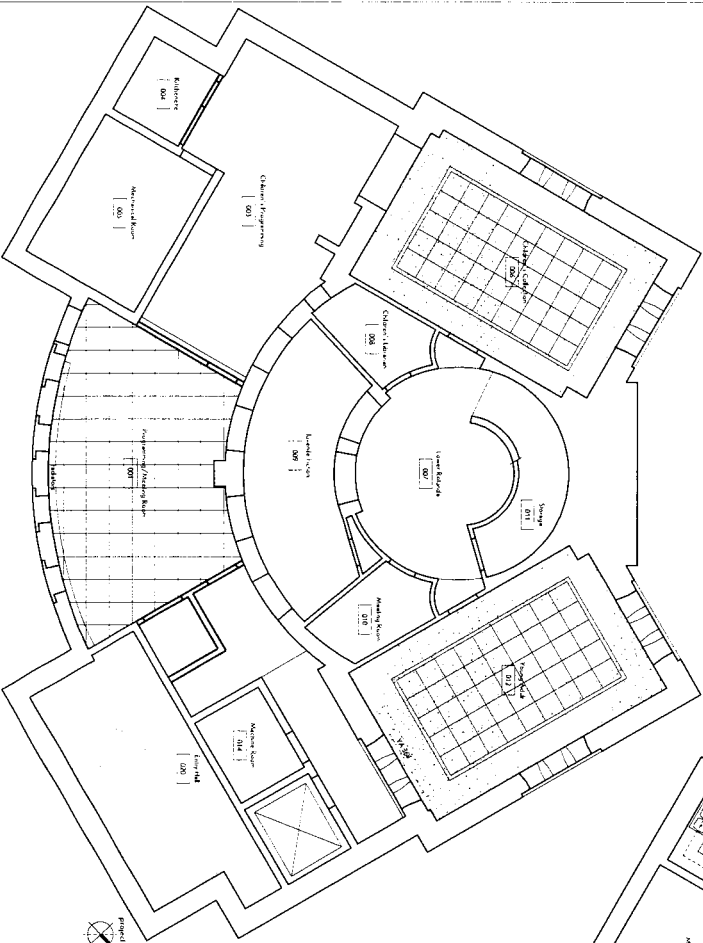


PROJECT: Main & Lower Level Demolition
SHEET: D-10
SCALE: 1/8" = 1'-0"

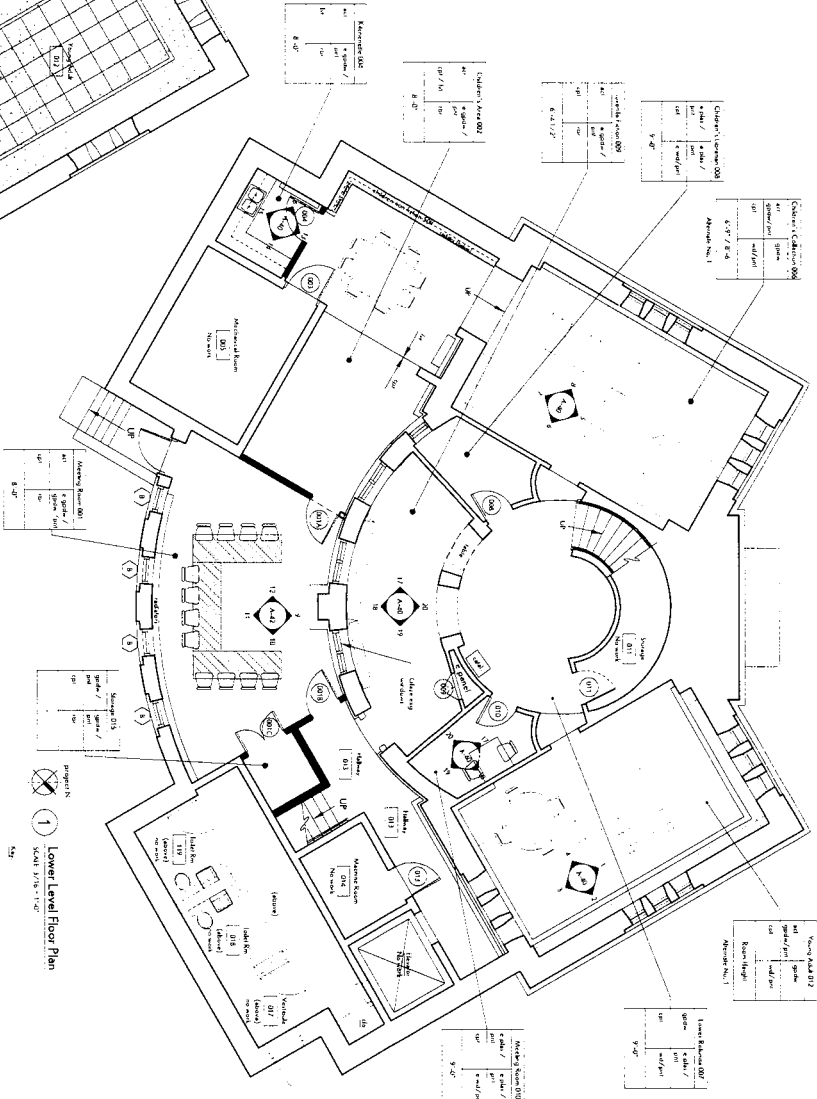
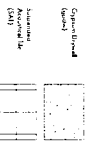


PROJECT: Main & Lower Level Demolition
SHEET: D-10
SCALE: 1/8" = 1'-0"

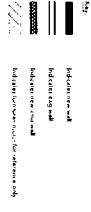
- Demolition Legend:**
- 1. Remove existing ceiling structure (Reference No. 1)
 - 2. Remove existing ceiling structure (Reference No. 2)
 - 3. Remove existing ceiling structure (Reference No. 3)
 - 4. Remove existing ceiling structure (Reference No. 4)
 - 5. Remove existing ceiling structure (Reference No. 5)
 - 6. Remove existing ceiling structure (Reference No. 6)
 - 7. Remove existing ceiling structure (Reference No. 7)
 - 8. Remove existing ceiling structure (Reference No. 8)
 - 9. Remove existing ceiling structure (Reference No. 9)
 - 10. Remove existing ceiling structure (Reference No. 10)
 - 11. Remove existing ceiling structure (Reference No. 11)
 - 12. Remove existing ceiling structure (Reference No. 12)
 - 13. Remove existing ceiling structure (Reference No. 13)
 - 14. Remove existing ceiling structure (Reference No. 14)
- Notes:**
1. Remove all existing ceiling structure (Reference No. 1) and install new ceiling structure (Reference No. 1).
 2. Remove all existing ceiling structure (Reference No. 2) and install new ceiling structure (Reference No. 2).
 3. Remove all existing ceiling structure (Reference No. 3) and install new ceiling structure (Reference No. 3).
 4. Remove all existing ceiling structure (Reference No. 4) and install new ceiling structure (Reference No. 4).
 5. Remove all existing ceiling structure (Reference No. 5) and install new ceiling structure (Reference No. 5).
 6. Remove all existing ceiling structure (Reference No. 6) and install new ceiling structure (Reference No. 6).
 7. Remove all existing ceiling structure (Reference No. 7) and install new ceiling structure (Reference No. 7).
 8. Remove all existing ceiling structure (Reference No. 8) and install new ceiling structure (Reference No. 8).
 9. Remove all existing ceiling structure (Reference No. 9) and install new ceiling structure (Reference No. 9).
 10. Remove all existing ceiling structure (Reference No. 10) and install new ceiling structure (Reference No. 10).
 11. Remove all existing ceiling structure (Reference No. 11) and install new ceiling structure (Reference No. 11).
 12. Remove all existing ceiling structure (Reference No. 12) and install new ceiling structure (Reference No. 12).
 13. Remove all existing ceiling structure (Reference No. 13) and install new ceiling structure (Reference No. 13).
 14. Remove all existing ceiling structure (Reference No. 14) and install new ceiling structure (Reference No. 14).



project N
 2 Lower Level
 Reflected Ceiling Plan
 SCALE: 1/8" = 1'-0"




project N
 1 Lower Level Floor Plan
 SCALE: 1/8" = 1'-0"



ACCOMMODATIONS

Room	Capacity	Notes
Lecture Hall 100	100	
Lecture Hall 101	100	
Lecture Hall 102	100	
Lecture Hall 103	100	
Lecture Hall 104	100	
Lecture Hall 105	100	
Lecture Hall 106	100	
Lecture Hall 107	100	
Lecture Hall 108	100	
Lecture Hall 109	100	
Lecture Hall 110	100	
Lecture Hall 111	100	
Lecture Hall 112	100	
Lecture Hall 113	100	
Lecture Hall 114	100	
Lecture Hall 115	100	
Lecture Hall 116	100	
Lecture Hall 117	100	
Lecture Hall 118	100	
Lecture Hall 119	100	
Lecture Hall 120	100	
Lecture Hall 121	100	
Lecture Hall 122	100	
Lecture Hall 123	100	
Lecture Hall 124	100	
Lecture Hall 125	100	
Lecture Hall 126	100	
Lecture Hall 127	100	
Lecture Hall 128	100	
Lecture Hall 129	100	
Lecture Hall 130	100	
Lecture Hall 131	100	
Lecture Hall 132	100	
Lecture Hall 133	100	
Lecture Hall 134	100	
Lecture Hall 135	100	
Lecture Hall 136	100	
Lecture Hall 137	100	
Lecture Hall 138	100	
Lecture Hall 139	100	
Lecture Hall 140	100	
Lecture Hall 141	100	
Lecture Hall 142	100	
Lecture Hall 143	100	
Lecture Hall 144	100	
Lecture Hall 145	100	
Lecture Hall 146	100	
Lecture Hall 147	100	
Lecture Hall 148	100	
Lecture Hall 149	100	
Lecture Hall 150	100	


- LEGEND:**
- Acoustic ceiling grid
 - Acoustic tile
 - Acoustic panel
 - Acoustic baffle
 - Acoustic absorber
 - Acoustic reflector
 - Acoustic diffuser
 - Acoustic reflector
 - Acoustic absorber
 - Acoustic reflector
 - Acoustic diffuser
 - Acoustic reflector
 - Acoustic absorber
 - Acoustic reflector
 - Acoustic diffuser
- REVISIONS:**
- | NO. | DATE | DESCRIPTION |
|-----|------------|--------------------------|
| 1 | 12/29/2011 | Issue for bidding |
| 2 | 1/9/2012 | Revised for construction |
- CLIENT / OWNER:**
 King's College
 135 North 3rd Street, Room 100
 Philadelphia, PA 19106
- PROJECT NUMBER:**
 135 N 3RD ST
- DATE:**
 12/29/2011



bero
ARCHITECTURE


24 West 11th Street, Suite 200
 Philadelphia, PA 19107

TEL: 215.922.1111
 FAX: 215.922.1112
 WWW.BEROARCHITECTURE.COM




SINTECH ENGINEERS

6900 University City
 Philadelphia, PA 19139




Langan Group

1400 Locust Walk
 Philadelphia, PA 19104



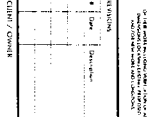
CWE

315 Kensington Ave.
 Philadelphia, PA 19106



ARCHITECTURE

135 North 3rd Street
 Philadelphia, PA 19106




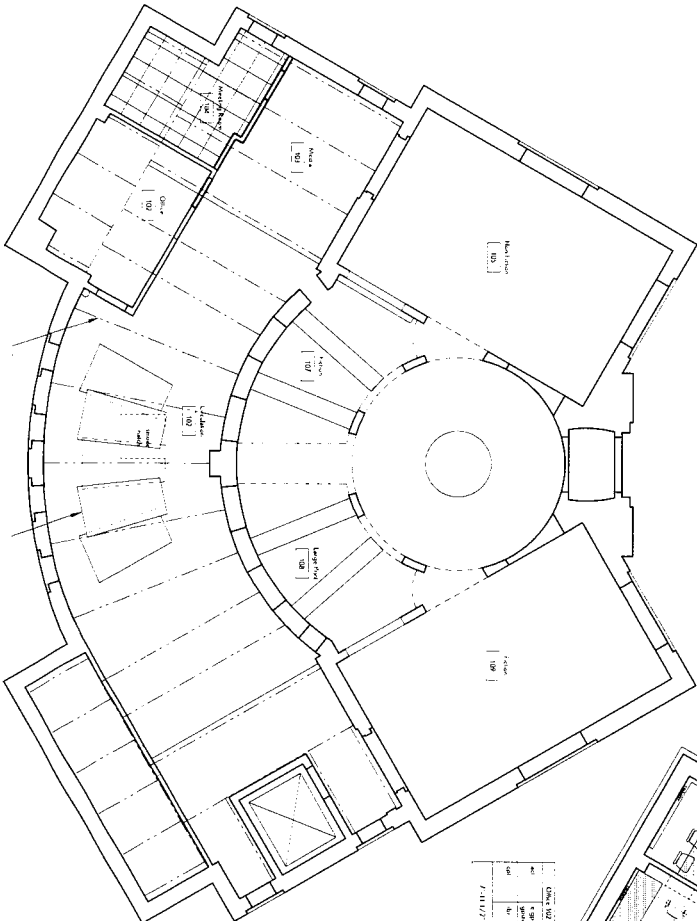
PROJECT INFORMATION

135 North 3rd Street
 Philadelphia, PA 19106

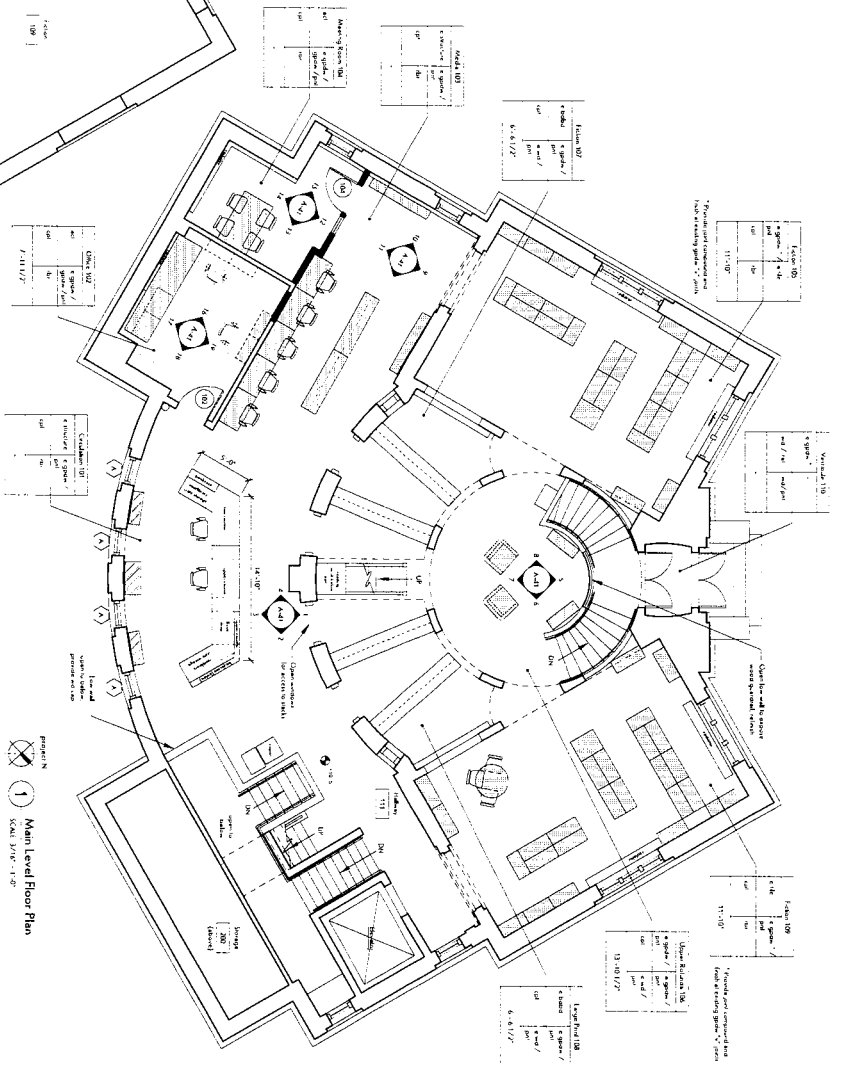
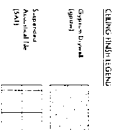
Lower Level
 Floor Plan &
 Reflected Ceiling Plan

SCALE NUMBER:
A-10

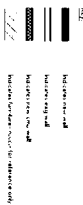




Project No. 2
Main Level
Reflected Ceiling Plan
SCALE: 3/16" = 1'-0"



Project No. 1
Main Level Floor Plan
SCALE: 3/16" = 1'-0"



ROOM SCHEDULE

Rooming program for the rights to the room and for the rights to the rooming program. The rooming program is the primary document for the rooming program. The rooming program is the primary document for the rooming program. The rooming program is the primary document for the rooming program.

Room No.	Room Name	Rooming Program
101	Office	Office
102	Office	Office
103	Office	Office
104	Office	Office
105	Office	Office
106	Office	Office
107	Office	Office
108	Office	Office
109	Office	Office
110	Office	Office
111	Office	Office
112	Office	Office
113	Office	Office
114	Office	Office
115	Office	Office
116	Office	Office
117	Office	Office
118	Office	Office
119	Office	Office
120	Office	Office
121	Office	Office
122	Office	Office
123	Office	Office
124	Office	Office
125	Office	Office
126	Office	Office
127	Office	Office
128	Office	Office
129	Office	Office
130	Office	Office
131	Office	Office
132	Office	Office
133	Office	Office
134	Office	Office
135	Office	Office
136	Office	Office
137	Office	Office
138	Office	Office
139	Office	Office
140	Office	Office
141	Office	Office
142	Office	Office
143	Office	Office
144	Office	Office
145	Office	Office
146	Office	Office
147	Office	Office
148	Office	Office
149	Office	Office
150	Office	Office
151	Office	Office
152	Office	Office
153	Office	Office
154	Office	Office
155	Office	Office
156	Office	Office
157	Office	Office
158	Office	Office
159	Office	Office
160	Office	Office
161	Office	Office
162	Office	Office
163	Office	Office
164	Office	Office
165	Office	Office
166	Office	Office
167	Office	Office
168	Office	Office
169	Office	Office
170	Office	Office
171	Office	Office
172	Office	Office
173	Office	Office
174	Office	Office
175	Office	Office
176	Office	Office
177	Office	Office
178	Office	Office
179	Office	Office
180	Office	Office
181	Office	Office
182	Office	Office
183	Office	Office
184	Office	Office
185	Office	Office
186	Office	Office
187	Office	Office
188	Office	Office
189	Office	Office
190	Office	Office
191	Office	Office
192	Office	Office
193	Office	Office
194	Office	Office
195	Office	Office
196	Office	Office
197	Office	Office
198	Office	Office
199	Office	Office
200	Office	Office

11 Woodland Street, Suite 200
New York, NY 10038
Tel: 212 693 1234
www.beroarch.com

CLIENT / OWNER

11 Woodland Street
New York, NY 10038

ARCHITECT

11 Woodland Street
New York, NY 10038

DATE

11/20/2012

PROJECT INFORMATION

11 Woodland Street
New York, NY 10038

PROJECT INFORMATION

11 Woodland Street
New York, NY 10038

ARCHITECT

11 Woodland Street
New York, NY 10038

DATE

11/20/2012

PROJECT INFORMATION

11 Woodland Street
New York, NY 10038

PROJECT INFORMATION

11 Woodland Street
New York, NY 10038

ARCHITECT

11 Woodland Street
New York, NY 10038

DATE

11/20/2012

PROJECT INFORMATION

11 Woodland Street
New York, NY 10038

